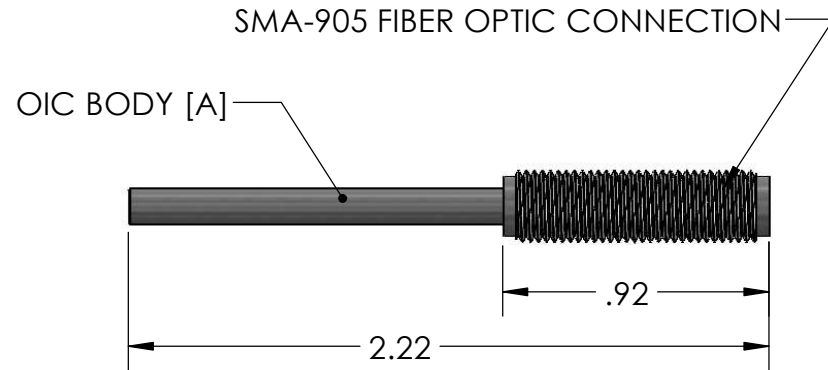
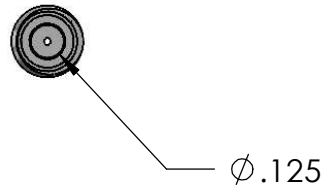
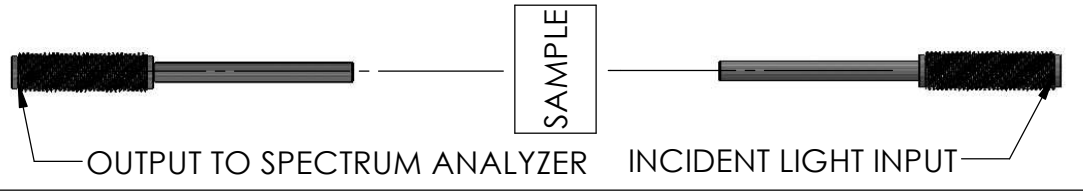


1/8" MICRO OPTICAL INTERFACE COUPLERS
PART NUMBER: 3040-AB-CDE


- A = BODY MATERIAL:** [0] 316SS [1] TITANIUM [2] HASTELLOY C 276 [3] MONEL [4] OTHER
B = FIBER TIP: [0] FLUSH MOUNTED
C = LENS: [5] FUSED SILICA (NO LENS REQUIRED)
D = WINDOW: [5] FUSED SILICA (FIBER ONLY)
E = WINDOW SEAL: [5] FDA APPROVED CLASS VI EPOXY

TYPICAL APPLICATION



STANDARD SPECIFICATIONS:

PATHLENGTH RANGE: 0.02 - 2.00 mm
 WAVELENGTH RANGE: UV-NIR [220-2400 nm]
 FIBER TERMINATIONS: SMA-905
 MAX TEMPERATURE: 204C [400F]
 MAX PRESSURE: 1000PSI

UNLESS OTHERWISE SPECIFIED:		NAME	DATE	 CUSTOM SENSORS & TECHNOLOGY A DIVISION OF CUSTOM SAMPLE SYSTEMS INC. 531A xminister Dr. Fenton, MO 63026-2903 (PHONE) 636-305-0666 www.customsensors.com
DIMENSIONS ARE IN INCHES TOLERANCES ARE: ANGULAR: $\pm .3$ deg. TWO PLACE DECIMAL $\pm .03$ THREE PLACE DECIMAL $\pm .005$		DRAWN	RJN	
INTERPRET GEOMETRIC TOLERANCING PER ASME Y14.5M		APPROVED		
MATERIAL		S.O.		
FINISH		P.O.		
DO NOT SCALE DRAWING		PROPRIETARY AND CONFIDENTIAL		TITLE: 1/8" MICRO OPTICAL INTERFACE COUPLER 3040 SERIES OVERVIEW
		THE INFORMATION CONTAINED IN THIS DRAWING IS THE SOLE PROPERTY OF CST. ANY REPRODUCTION IN PART OR AS A WHOLE WITHOUT THE WRITTEN PERMISSION OF CST IS PROHIBITED.		SIZE DWG. NO. REV A 3040-AB-CDE 1.10
		SCALE: 1:4	WEIGHT:	SHEET 1 OF 1