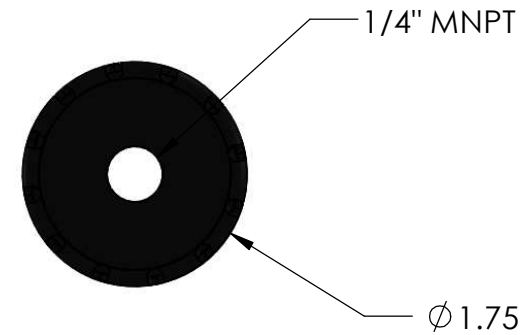
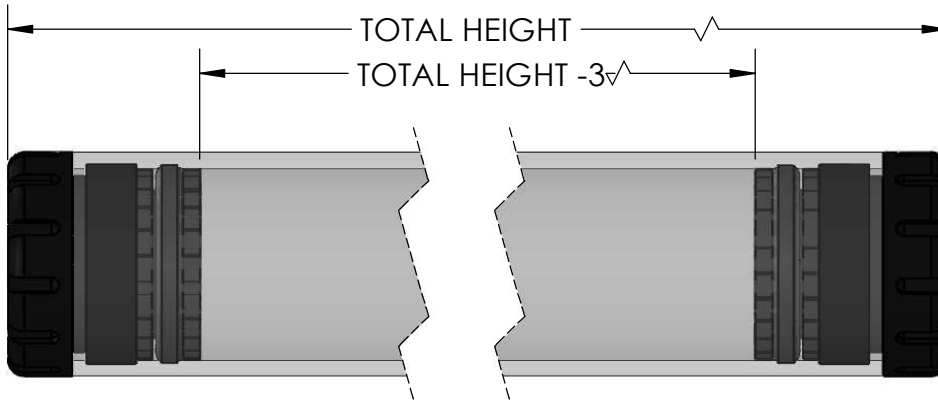
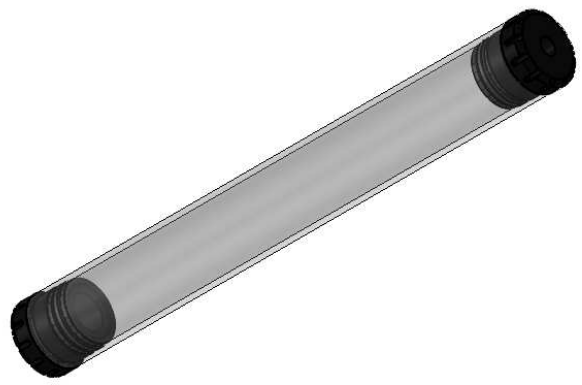



1.75" DIAMETER H2S SCRUBBER
PART NUMBER: 24AB-CDE

AB = TOTAL HEIGHT [cm]: (STANDARD 15 in / 38 cm)
CD = ACTIVE MATERIAL HEIGHT [cm]: (STANDARD 12 in / 30.5 cm)
E = SCRUBBER MATERIAL: [0] COPPER CUPRIC [1] IRON OXIDE



STANDARD SPECIFICATIONS:
 WETTED MATERIALS: POLYCARBONATE/NEOPRENE
 MAX TEMPERATURE: 38C (100F)
 MAX PRESSURE: 125 PSI
 LENGTH: 15" / 38 cm



UNLESS OTHERWISE SPECIFIED: DIMENSIONS ARE IN INCHES TOLERANCES ARE: ANGULAR: ± .3 deg. TWO PLACE DECIMAL ± .03 THREE PLACE DECIMAL ± .005 INTERPRET GEOMETRIC TOLERANCING PER ASME Y14.5M MATERIAL FINISH DO NOT SCALE DRAWING	DRAWN RJN	NAME RJN	DATE 20190122	 CUSTOM SENSORS & TECHNOLOGY A DIVISION OF CUSTOM SAMPLE SYSTEMS INC. 531 Axminister Dr. Fenton, MO 63026-2903 (PHONE) 636-305-0666 www.customsensors.com	
	APPROVED	S.O. P.O.			
	PROPRIETARY AND CONFIDENTIAL THE INFORMATION CONTAINED IN THIS DRAWING IS THE SOLE PROPERTY OF CST. ANY REPRODUCTION IN PART OR AS A WHOLE WITHOUT THE WRITTEN PERMISSION OF CST IS PROHIBITED.				TITLE: 2400 SERIES
	SIZE A		DWG. NO. 24AB-CDE		REV 1.00
SCALE: 1:4		WEIGHT:	SHEET 1 OF 1		