

# 1/2" MICRO CROSS FLOW CELL WITH 1/2" MICRO OPTICAL INTERFACE COUPLERS

PART NUMBER: 3005-AB-CDE

**A = BODY MATERIAL:** [0] 316SS [1] TITANIUM [2] HASTELLOY C 276 [3] MONEL [4] OTHER

**B = PORT CONNECTION:** [2] 1/2" COMPRESSION

**C = OIC LENS:** [5] FUSED SILICA

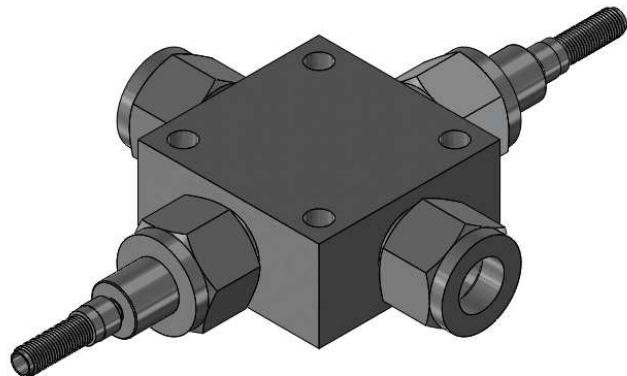
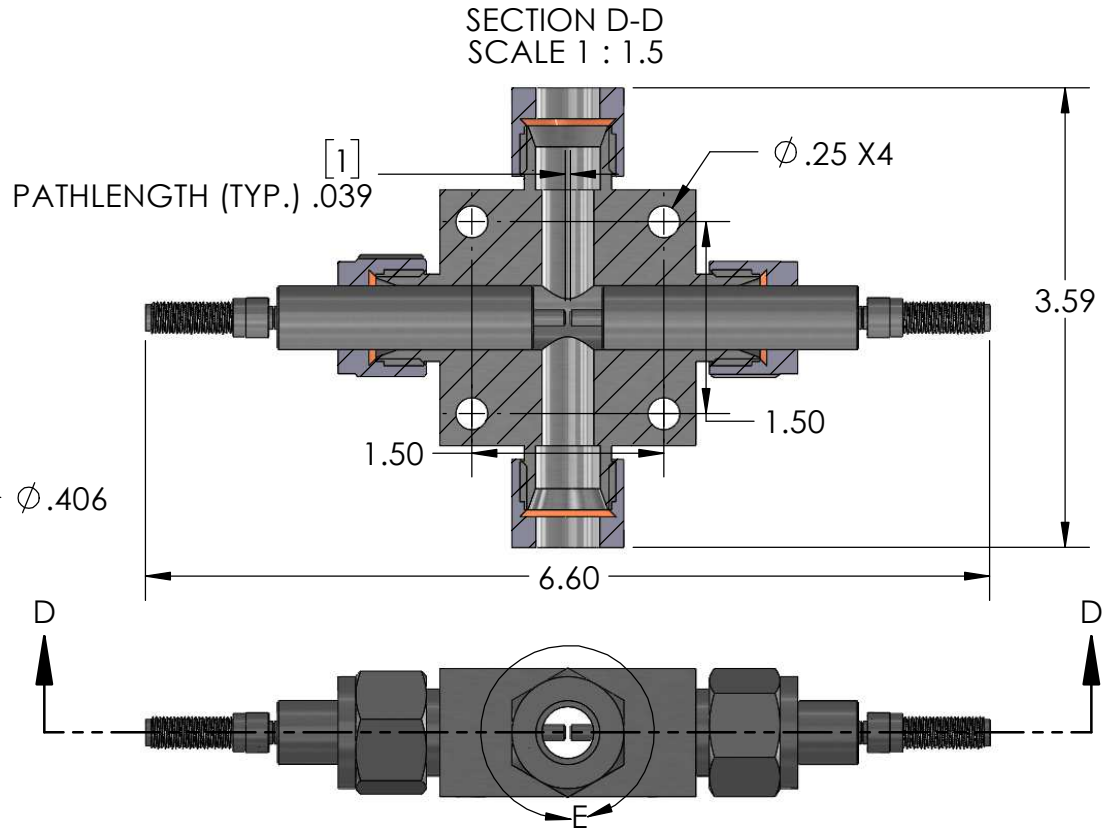
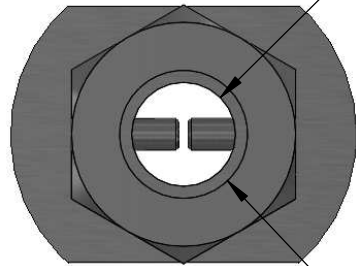
**D = OIC WINDOW:** [5] FUSED SILICA

**E = OIC SEAL:** [5] FDA APPROVED CLASS VI EPOXY

### SPECIFICATIONS:

PATHLENGTH: 0.02 - 2.00mm (ADJUSTABLE)  
 WAVELENGTH RANGE: UV-NIR [220-2400 nm]  
 FIBER TERMINATIONS: SMA-905  
 MAX TEMPERATURE: 204C (400F)  
 MAX PRESSURE: 1000PSI

DETAIL E  
SCALE 2 : 1.5



**UNLESS OTHERWISE SPECIFIED:**

DIMENSIONS ARE IN INCHES  
 TOLERANCES ARE:  
 ANGULAR: ± .3 deg.  
 TWO PLACE DECIMAL ± .03  
 THREE PLACE DECIMAL ± .005

INTERPRET GEOMETRIC TOLERANCING PERASME Y14.5M

MATERIAL

FINISH

DO NOT SCALE DRAWING

NAME	DATE
RJN	20181108
APPROVED	
S.O.	
P.O.	

**PROPRIETARY AND CONFIDENTIAL**

THE INFORMATION CONTAINED IN THIS DRAWING IS THE SOLE PROPERTY OF CST. ANY REPRODUCTION IN PART OR AS A WHOLE WITHOUT THE WRITTEN PERMISSION OF CST IS PROHIBITED.



CUSTOM SENSORS & TECHNOLOGY  
 A DIVISION OF CUSTOM SAMPLE SYSTEMS INC.  
 531A xminister Dr. Fenton, MO 63026-2903  
 (PHONE) 636-305-0666 www.customsensors.com

TITLE:  
**1/2" MICRO CROSS FLOW CELL  
 3005 SERIES OVERVIEW**

SIZE	DWG. NO.	REV
<b>A</b>	3005-AB-CDE	1.00

SCALE: 1:2 WEIGHT: SHEET 1 OF 1